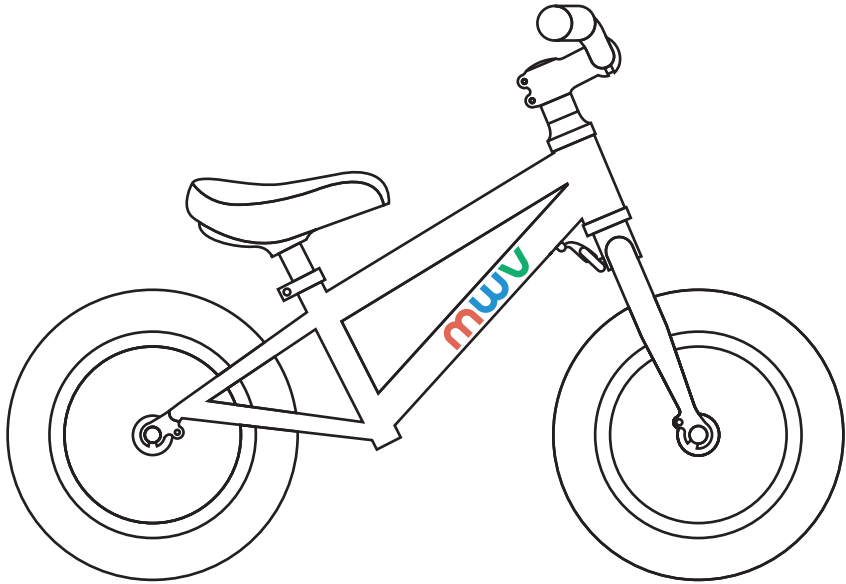




**mwv**  
bikes

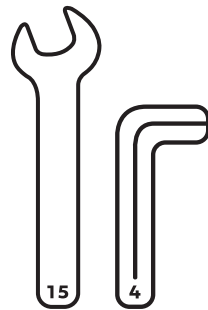
Assembly Instructions



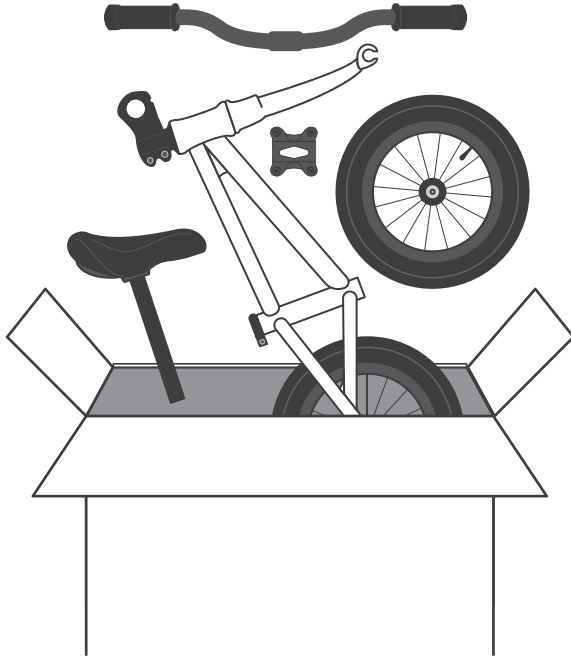
### Tools

1 x 4mm Hex Key

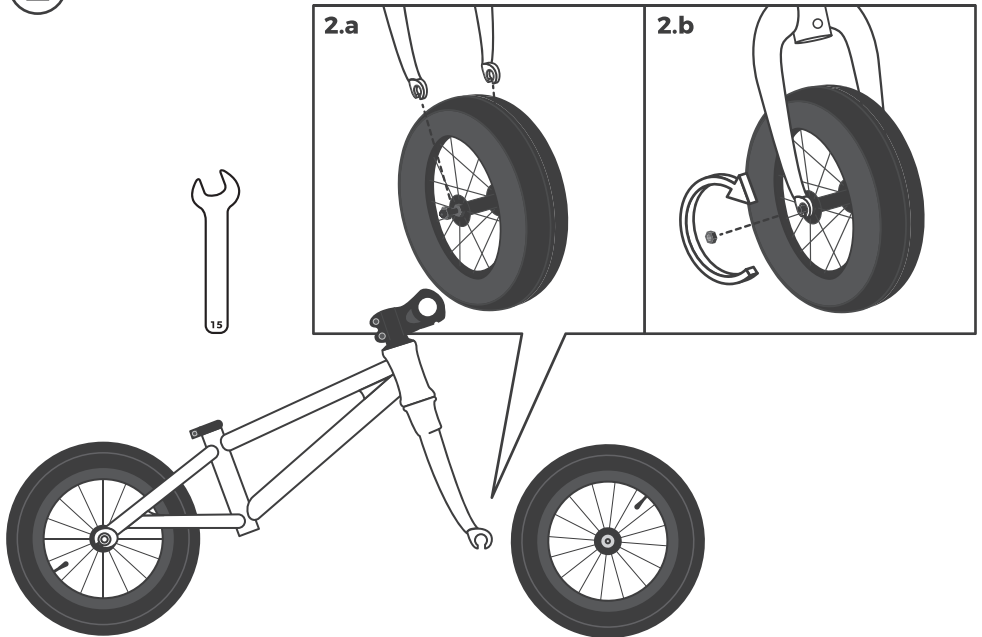
1 x 15mm Wrench



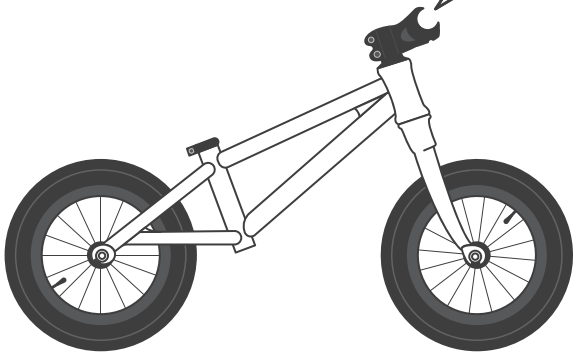
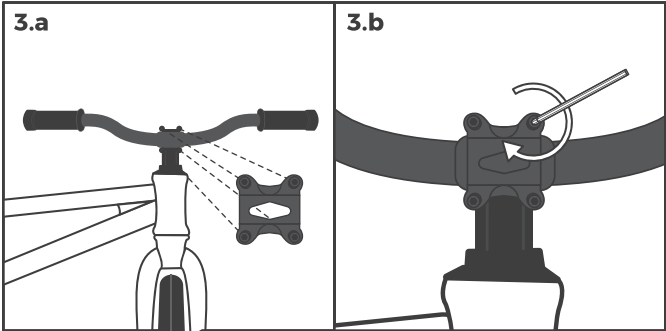
1



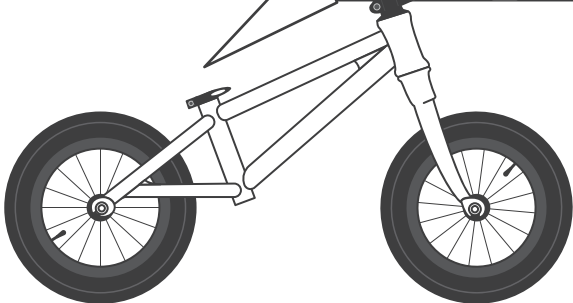
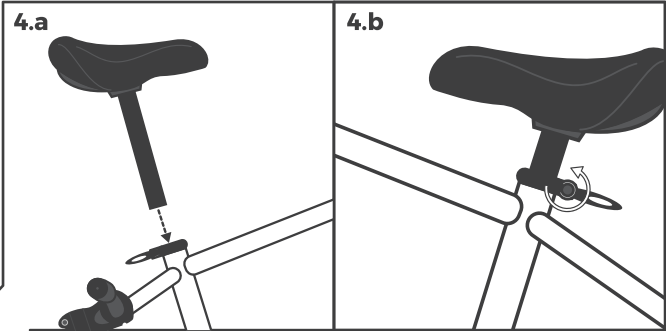
2



3



4



## WARNING & SAFETY:

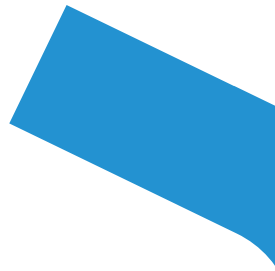
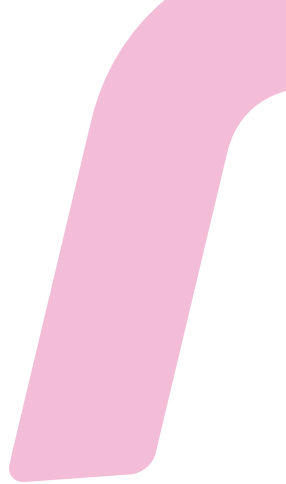
- Please keep these instructions for future reference.
- This product should be assembled by adults only.
- Always keep all parts out of reach of children as they can pose a choking hazard.
- Before first use, make sure the balance bike is properly and safely assembled.
- Regular checks should be carried out ensuring all screws are tightened.
- A helmet should be worn at all times whilst riding. Gloves, elbow pads and knee pads are also recommended.
- Balance bikes must never be used on public highways.
- Do not allow your child to ride near stairs, public roads, steep slopes, bodies of water or on gravel, sand or slippery floors.
- Balance bikes should always be used under adult supervision.
- Maximum user weight 30kg. Bike can only carry one child at a time.
- Intended for use by children aged 2 - 5 years old. Size and weight of children can vary so please ensure that child's feet can safely touch the floor before use.
- This balance bike should be stored in a dry place.
- This balance bike should be cleaned only with a damp cloth and then dried thoroughly.
- No chemical cleaners should be used as this will damage the bike.
- Not suitable for children under the age of 18 months.

Designed in Wales and manufactured in China.

UKCA Certified.  
EN71-1, EN71-2, EN71-3 & CE certified.



[info@mwvbikes.com](mailto:info@mwvbikes.com)



[www.mwvbikes.com](http://www.mwvbikes.com)